

OWNER & SUBDIVIDER

ADAMS FAMILY LIFETIME TRUST
Charles W. Adams, Trustee
3040 Spring Mill Drive, Suite A
Springfield, IL 62704
(217) 787-4488

KRESTON PLACE PLAT 5

PART OF THE EAST HALF OF THE NORTHWEST FRACTIONAL QUARTER
OF SECTION 1, TOWNSHIP 15 NORTH, RANGE 6 WEST OF THE 3RD P.M.
SANGAMON COUNTY, ILLINOIS.

AREA: 9.313 ACRES

Aluminum M
NE Corner,
Section 1
T15N, R6W,
Point of Co

LOT AREAS

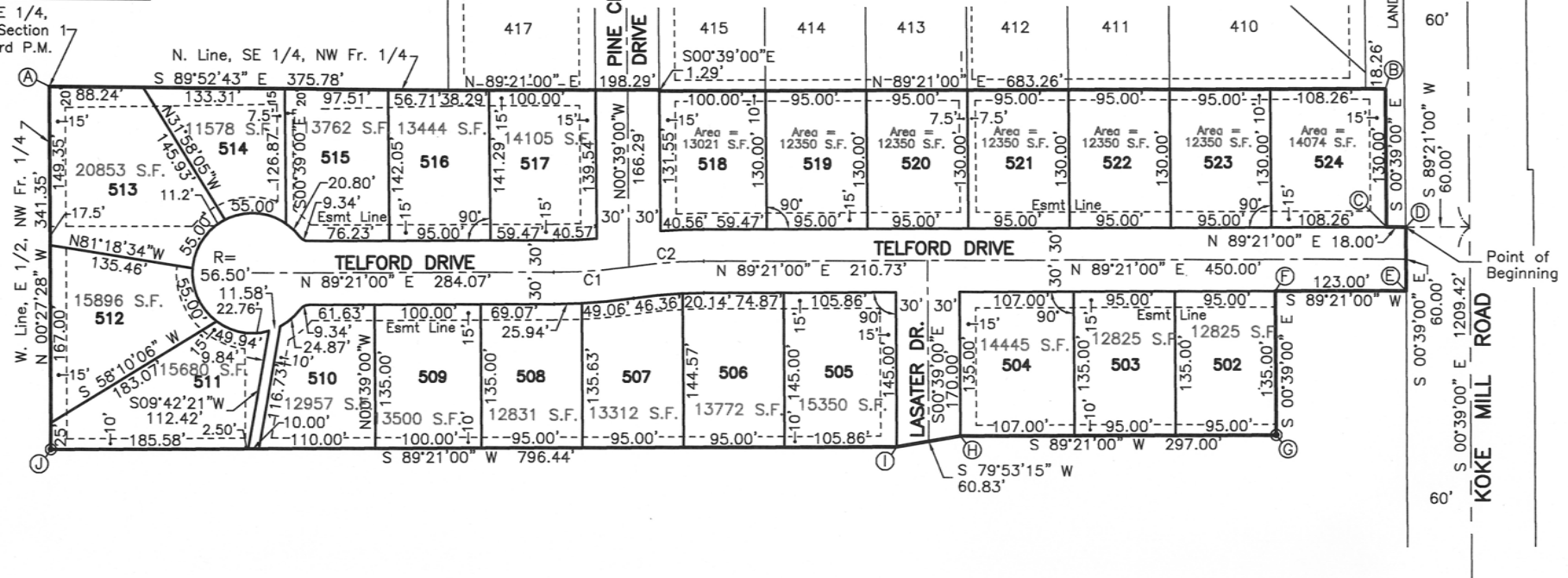
LOT	AREA
502	12825 S.F.
503	12825 S.F.
504	14445 S.F.
505	15350 S.F.
506	13772 S.F.
507	13312 S.F.
508	12831 S.F.
509	13500 S.F.
510	12957 S.F.
511	15680 S.F.
512	15896 S.F.
513	20853 S.F.
514	11578 S.F.
515	13762 S.F.
516	13444 S.F.
517	14105 S.F.
518	13021 S.F.
519	12350 S.F.
520	12350 S.F.
521	12350 S.F.
522	12350 S.F.
523	12350 S.F.
524	14074 S.F.

BOUNDARY CORNER COORDINATES		
Corner	North	East
A	1134751.2345	2421994.9640
B	1134759.1543	2423252.2497
C	1134629.1627	2423253.7248
D	1134629.3670	2423271.7236
E	1134569.3708	2423272.4044
F	1134567.9752	2423149.4124
G	1134432.9839	2423150.9442
H	1134429.6139	2422853.9633
I	1134418.9337	2422794.0806
J	1134409.8968	2421997.6914

COORDINATES ARE ASSUMED

K R E S T O N P L A C E
P L A T 4

NW Corner, SE 1/4,
NW Fr. 1/4, Section 1
T15N, R6W, 3rd P.M.



S 00°39'00"E 1860.77'
E. Line, NW Fr. 1/4

S 89°21'00" W
60.00'

S 00°39'00" E 1209.42'
S 89°21'00" E 1209.42'

Point of Beginning